

U.S.:
 Crystal Beach Park
 1700 Niagara St.
 Buffalo, NY 14207
 716-873-0830

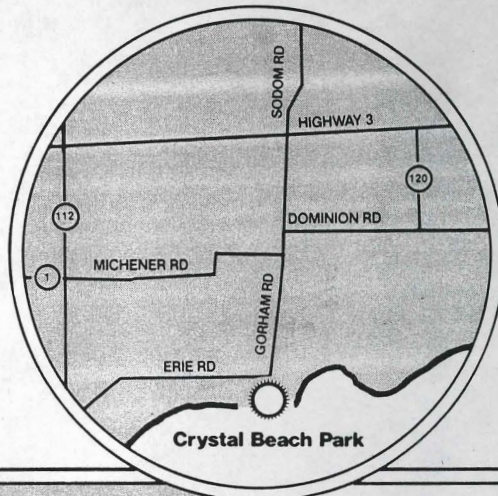
CRYSTAL BEACH

P · A · R · K

Canada:
 Crystal Beach Park
 P.O. Box 640
 Crystal Beach, Ontario L0S 1B0
 1-416-894-2240 for Group Sales
 or General Information

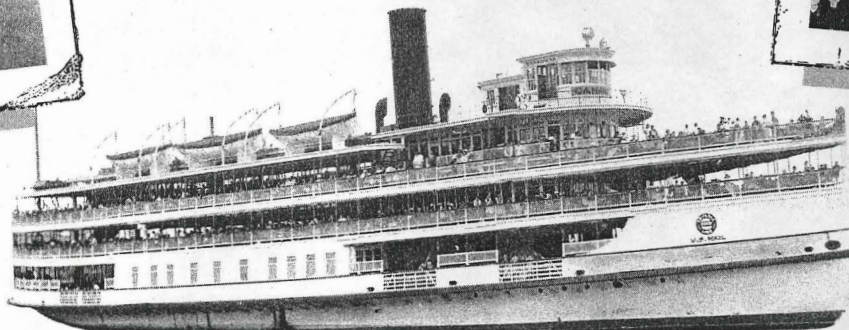
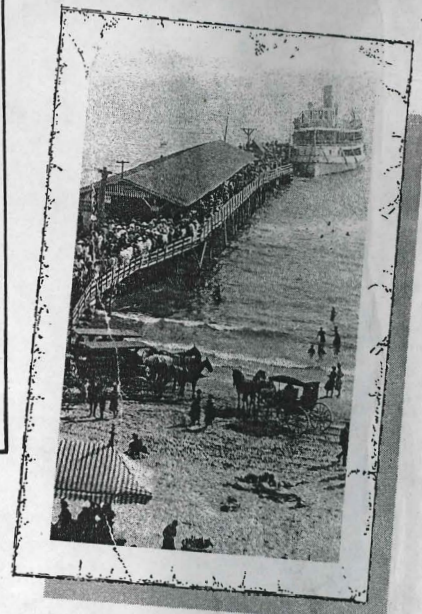
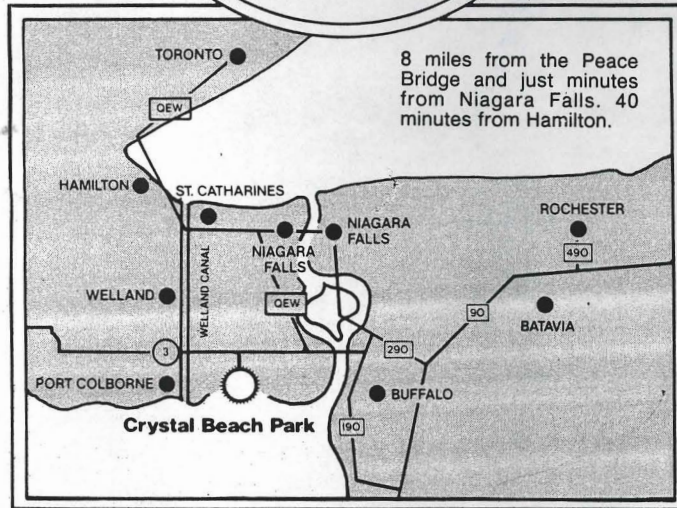
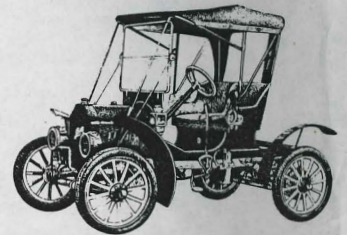
It's a short drive.

Crystal Beach is only minutes from the Peace Bridge and Niagara Falls and only 40 minutes from Hamilton directly off the QEW, Sodom Road & Crystal Beach exit. Just take Highway 3 to the Crystal Beach turn off. You can't miss the signs.



Or Come By Boat.

For the first time in three decades, visitors can arrive at Crystal Beach Park by boat. The Americana, a 750-passenger vessel, will depart from the foot of Main Street in Buffalo five times a day, seven days a week.



Celebrating 100 Years of Fun Under the Sun