

How to wear a Chain of Office

The following recommendations are based upon an article which appeared in the Australian local government publication Shire and Municipal Record, January 1977. The photographs, which correspond with those used in the original article, feature Lorne Carroll, Warden, County of Elgin who agreed to pose for these accompanying illustrations.

Many councils today ensure that the Mayor, Warden or Chairman wears a chain of office to denote his rank.

Unhappily not every person entitled to wear this distinguishing regalia is familiar with the manner in which the chain should be worn.

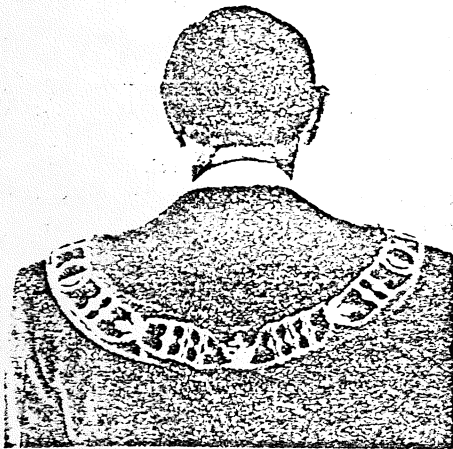
The accompanying illustrations will undoubtedly assist those concerned with correct wearing of regalia.



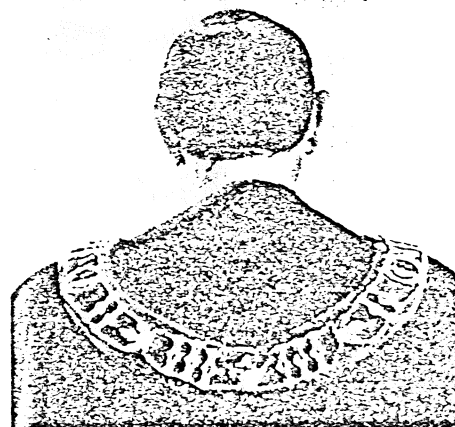
Properly worn the pendant of the chain rests high on the chest so that it can be seen sitting or standing. A chain can be worn with a suit or a robe but a robe should not be worn without a chain.



A horrible example. Never wear a chain like a girl's necklace close to the neck so the pendant dangles about the stomach.



The chain should be worn over the points of the shoulders and down the back just as far as it does in the front. The chain is then balanced and does not tug at the neck. Two hooks fixed on the underside of the chain and piercing the coat at the point of the shoulders may hold it in position.



If worn with a robe the ribbon-ties on the shoulders hold the chain in the correct position.